

# ***smba***

***Saratoga Mountain Bike Association***

***www.saratogamtb.org***

## **2017 Year End Meeting**

## **November 11, 2017**



# 2017 Year in Review

- Trail Building:
  - Pittstown, Moreau, Poestenkill
- Many trail maintenance days
- Grafton MTB Festival
- Group ride at Grafton Winterfest





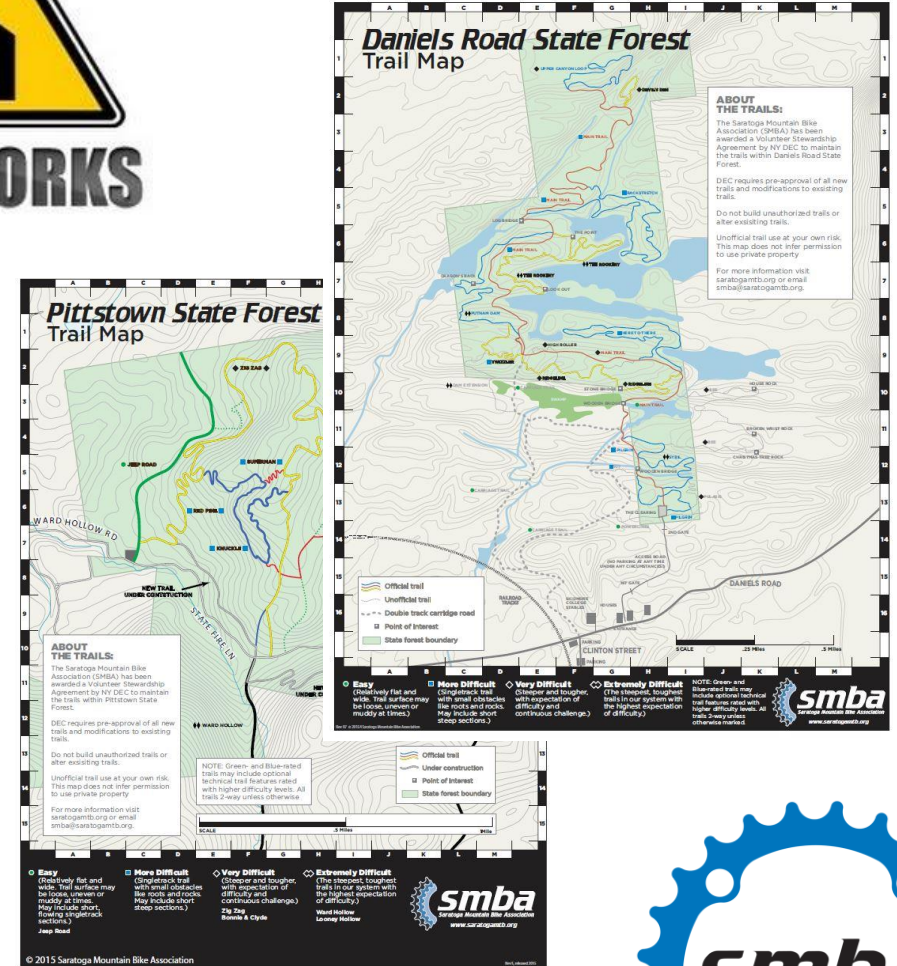
# 2017 Year in Review

- Better communication through Facebook, Website, Email-Newsletters!
- Opted out of ADK Expo
- SMBA “Rowdy” group rides: Bebee, Elm Ridge, Daniels Road, Grafton Lakes
- Raffles for Trail Work Volunteers!



# 2017 Year in Review

- Simple maps for 2017
- Geo-PDF Maps: work in progress
- Utilizing Pinkbike Trailforks App
  - Trail Routes & Trail Conditions
- Membership processing thru website





# Grafton MTB Fest

*June 17 at Grafton Lakes State Park*

- Simplified for 2017
- Group Rides & Food
- Good weather
- Decent turnout





# Grafton MTB Fest





# Grafton MTB Fest



# Group Rides / Ridin' Rowdy!

Area riders want more group rides!

- **June:** Grafton Lakes State Park
  - Grafton Rocks 2017! **Intermediate**
- **July:** Elm Ridge
  - Inaugural Ridin' Rowdy **Advanced**
- **August:** Grafton Lakes State Park
  - Birds of a Feather Event **Intermediate** -> **Advanced**
- **August:** Bebee Hill
  - **Advanced**
- **October:** Daniels Road
  - **Intermediate**
- **November:** Daniels Road
  - Year End Ride / Freeze-a-Thon **Intermediate**



**SMBA Rider Survey**

We want to hear from you!

\* Required

Saratoga Mountain Bike Association (SMBA) is looking for your feedback on how we can better serve riders in the Capital District. Help us out by taking a few minutes to fill out this survey and you'll be entered into a drawing to receive one of four \$25 gift cards. The winners will be announced at our year end meeting Saturday, November 19th at 3:00pm at The Mill on Round Lake. No, you don't need to be present to win, but why not join your fellow mountain bikers for a beer and hear what the club has been up to and what we have planned!

**smba**  
SARATOGA MOUNTAIN BIKE ASSOCIATION  
www.saratogamb.org

Are you currently a member of Saratoga Mountain Bike Association (SMBA) ? \*

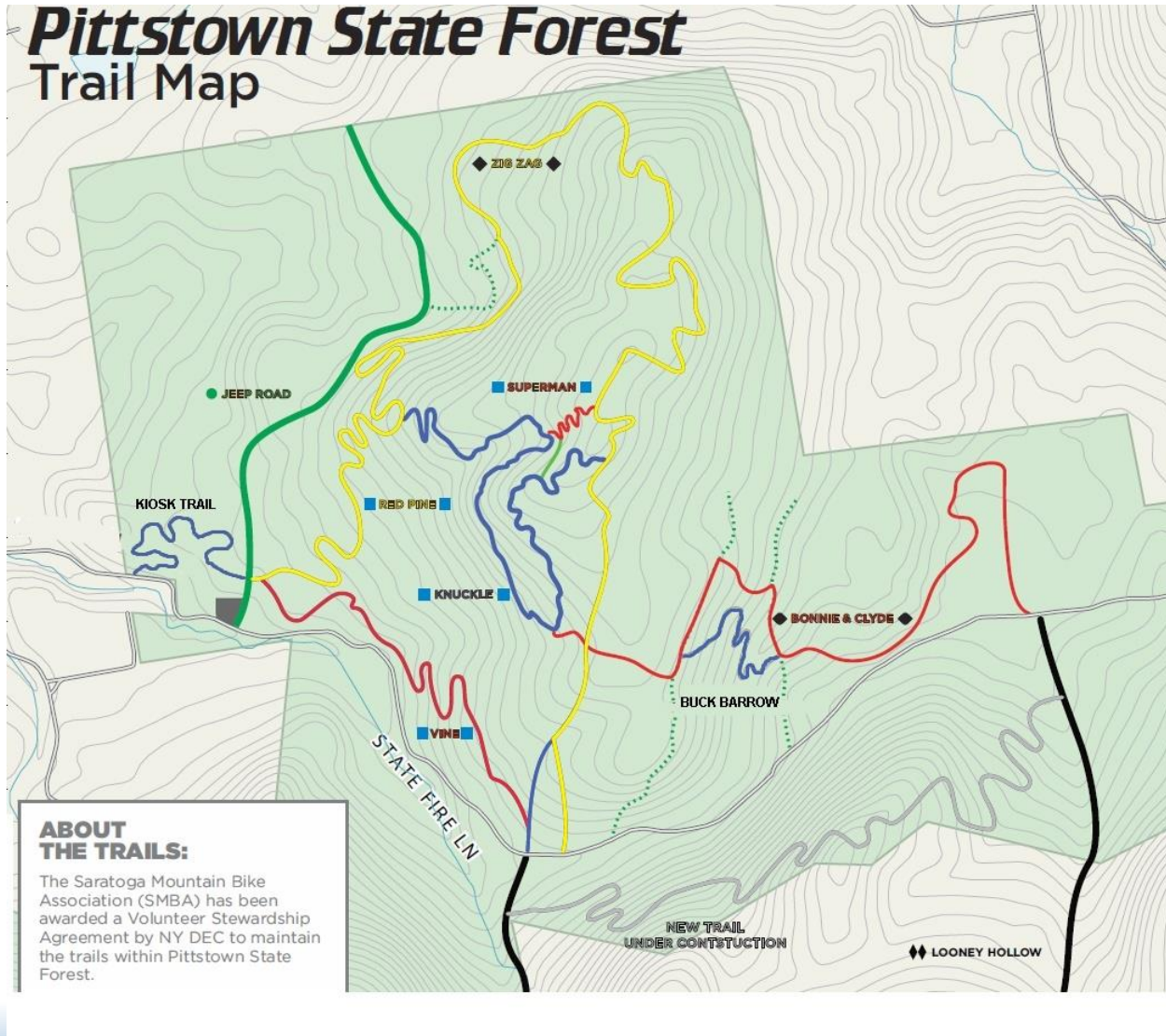
☐ Yes

☐ No





# Pittstown State Forest




## Accomplishments

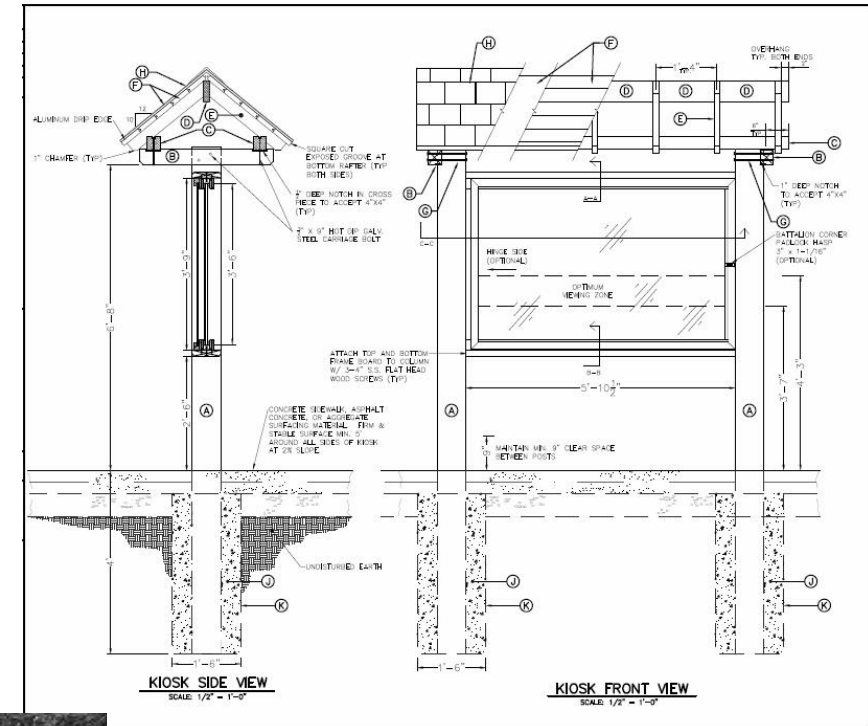
- Completed construction of the “Buck Barrow” Trail
- Started construction of the “Kiosk” Trail
- Berm Maintenance
- Spring & Fall Clean Up



# Pittstown State Forest

## Short Term Plans / Goals

- Finish Kiosk Trail
  - Complete small re-routes on BC & ZZ
  - Trail Signage
  - Build Kiosk
- 

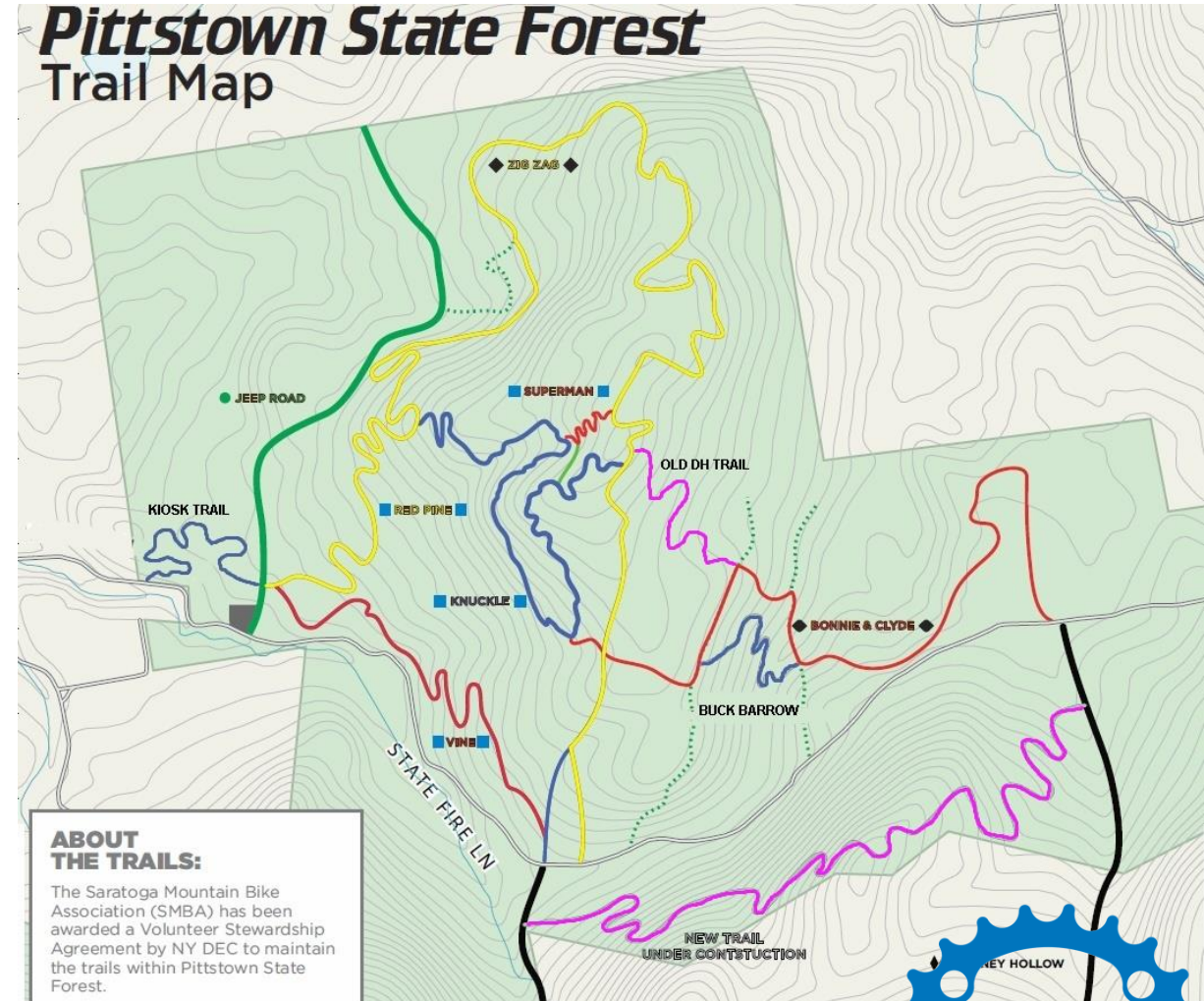




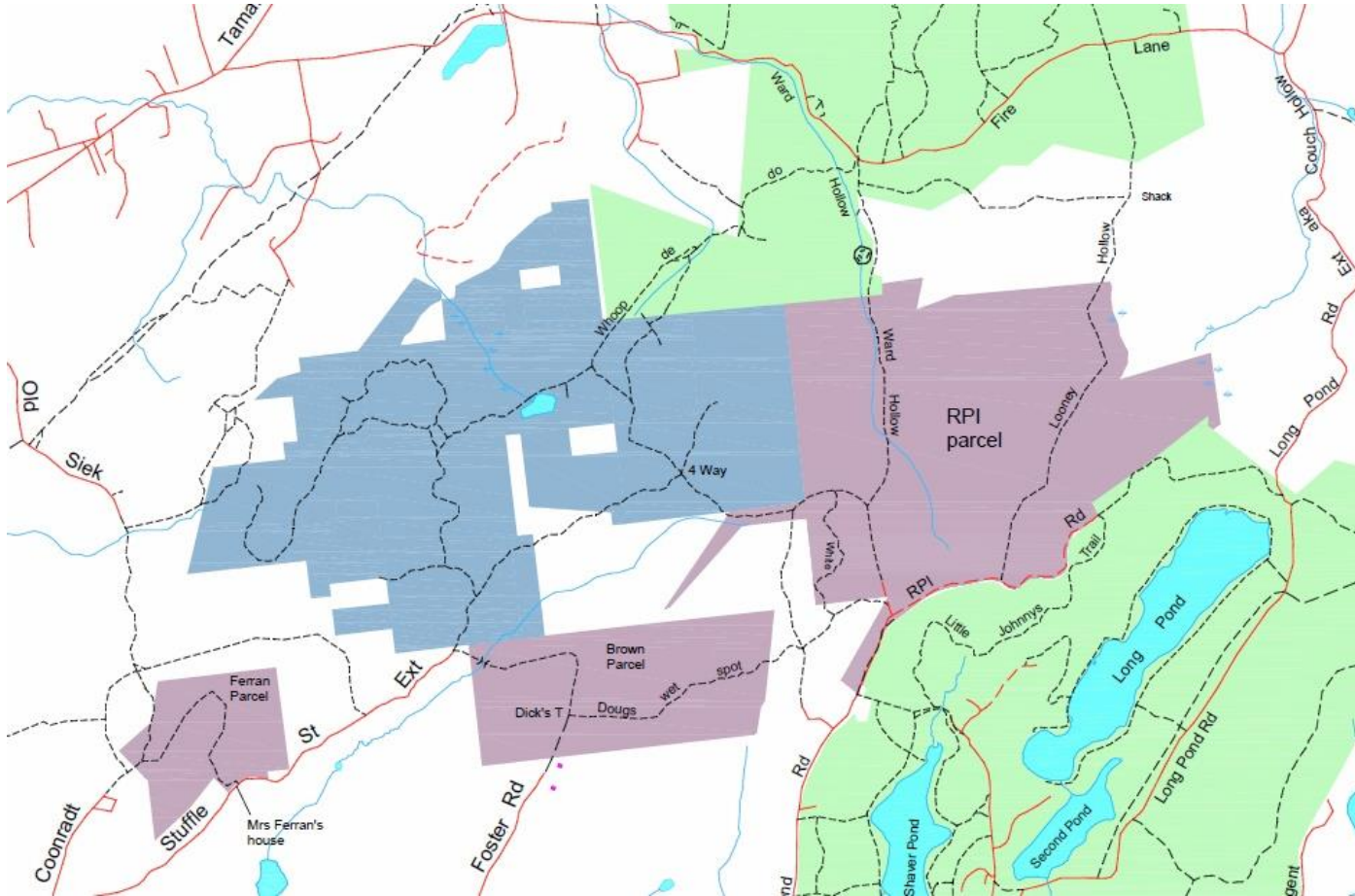
# Pittstown State Forest

## Long Term Plans / Goals

- Complete trail on South Side of Fire Lane
  - 2.75 Miles, 500' Elevation
  - Must wait until timber sale is done
- Revamp DH Trail
  - Old DH trail on backside of summit
  - Needs to be cleared and maintained
- Pittstown Expansion!



# Pittstown Expansion!



950+ acres to be added to PSF

- RPA purchased property late 2016
- Will be sold to DEC early 2018
- New trail building to begin after DEC completes UMP





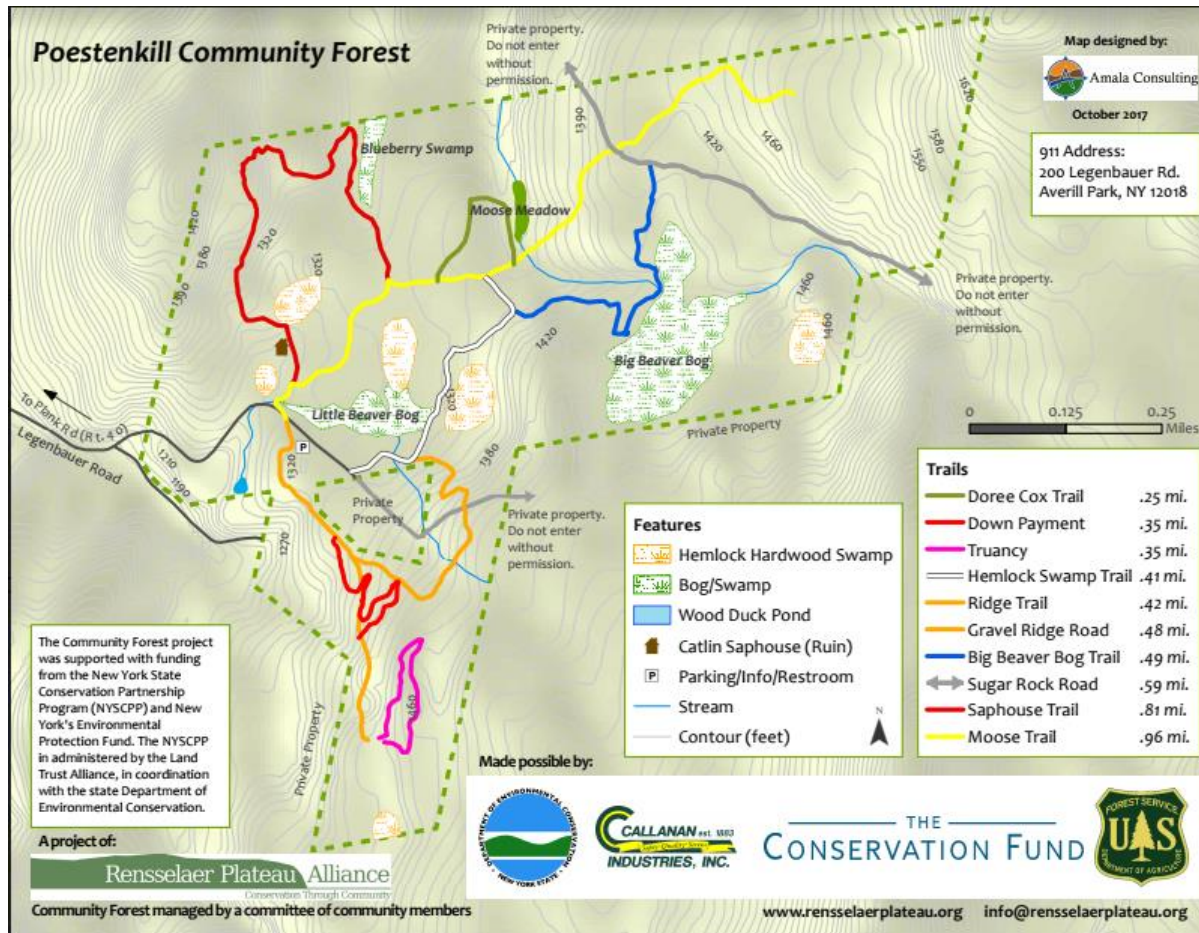
# Pittstown Expansion!

Amazing Terrain!

- Vistas, meadows, rocks features, etc



# Poestenkill Community Forest



- New map available at RPA website, trails expanding slowly
- Trails on south side of road are catered to bikes
- Parking lot is great
- Toilet is being built
- Southeast corner abuts Cowee Forest which is part of 16000 acres RPA and the Conservation Fund are protecting.





# Poestenkill Community Forest



- 4 trail days in 2017
  - One with skid steer (Thank you Gallivan Corp!)
  - One with RPI frat
  - 208 hours total



# Poestenkill Community Forest



We have RPA's blessing to start skills park construction! Just need the labor.





# Daniels Road State Forest

## 2017 Projects

- Bridge replacement w DEC
- General maintenance, blowdown removal, & leaf clearing

## STILL waiting...

- Parking lot access & kiosk
- Skidmore easement
- New trails



# Membership Summary

## **138 Members in 2017**

Changed to Membership sales on our website with new fees for 2017

- Individual Membership \$27.50
- Family Membership \$42.50
- 2017 Membership Sales: 69 Memberships Sold
  - 48 Individual
  - 21 Family
  - 128 total paid members from website sales
- Club Donations: \$270 (up from \$135 last year)
- Additional memberships from officers and event sales– about 10
- ***Total Membership for 2017 (to date): 138***

### Past Years Membership:

2016: 206

2015: 198

2014: 195

2013: 455

2012: 456





# Financial Summary

Calendar Year	Income	Expenses	Difference
2017*	\$2,379.97	\$3,310.16	- 930.18
2016	\$5,306.10	\$5,861.62	-555.52
2015	\$6,946.00	\$5,503.51	1,442.49
2014	\$7,146.00	\$8,099.10	-953.10

- **Annual Reports available:** <https://github.com/Choens/smba-financials/tree/master/reports>
- **\*2017 Numbers are incomplete**



# Looking ahead...

- Planning for event in 2018
- More group rides
- Fundraising & raffles
- More trailbuilding!
  - Pittstown
  - Thacher Park
  - Daniels Road
  - Poestenkill & Grafton Forest
  - Palmertown Range/Moreau
- Continued focus to make the most of our efforts





# And last but not least... Elections & Raffle!

## Continuing on:

- President – Chris Morris
- Treasurer- Andy Choens
- Daniels Road Trail directors - Owen Dougherty and Art Picard
- Pittstown Trail Director – Chris Cavanaugh
- Poestenkill CF Trail Directors - Ian Bonesteel and Jason Anderson

## Open Positions/Nominations:

- Vice President North – Adam Giannini
- ***Secretary – OPEN***
- Membership Director – Kim Didrich

*Looking to get involved?  
We can always use help  
organizing work days,  
leading trail crews and  
working behind the  
scenes.*

*Reach out to us!*

*BIG Thanks to Drew Roginski, Josh Haugh, and Theresa Crombach for their years of service with the club!*

