



2016 Year End Meeting

November 19, 2016



2016 Year in Review



Another great year for Mountain Biking in our region!

- ADK Sports and Fitness Expo
- I Love My Park Day @ Moreau and Thacher
- Grafton MTB Fest
- Moreau & Pittstown Trail Building
- Many trail maintenance days
- Relationship building and Advocacy
- Rider Survey



2016 Year in Review

Advertising and Sponsors:

- *Modern Press*
- *Elevate Cycles*
- *Spa City Bicycle Works*
- *Blue Sky Bicycles*
- *Sky High Adventures*
- *Grey Ghost Bicycles*
- *Rensselaer Plateau Alliance*
- *Healthy Living Market*
- *Browns Brewing*
- *Hannaford Supermarkets*



2016 Year in Review

Maps

- Maps sponsors in 2016!
 - *Thank you!*
- Double sided print
 - *Daniels Road and Pittstown*
- Geo-PDF Maps
 - *Use with your smartphone*
- Updates for next year



Grafton MTB Fest

June 11 at Grafton Lakes State Park

- Group Rides
- Food & Bike Vendors
- Raffles, T-Shirts, Jerseys
- RAIN ☹️
- Good turnout considering weather
- Well organized and good practice for next year!



Grafton MTB Fest



2016 Year End Meeting

Grafton MTB Fest



2016 Year End Meeting

Pittstown State Forest

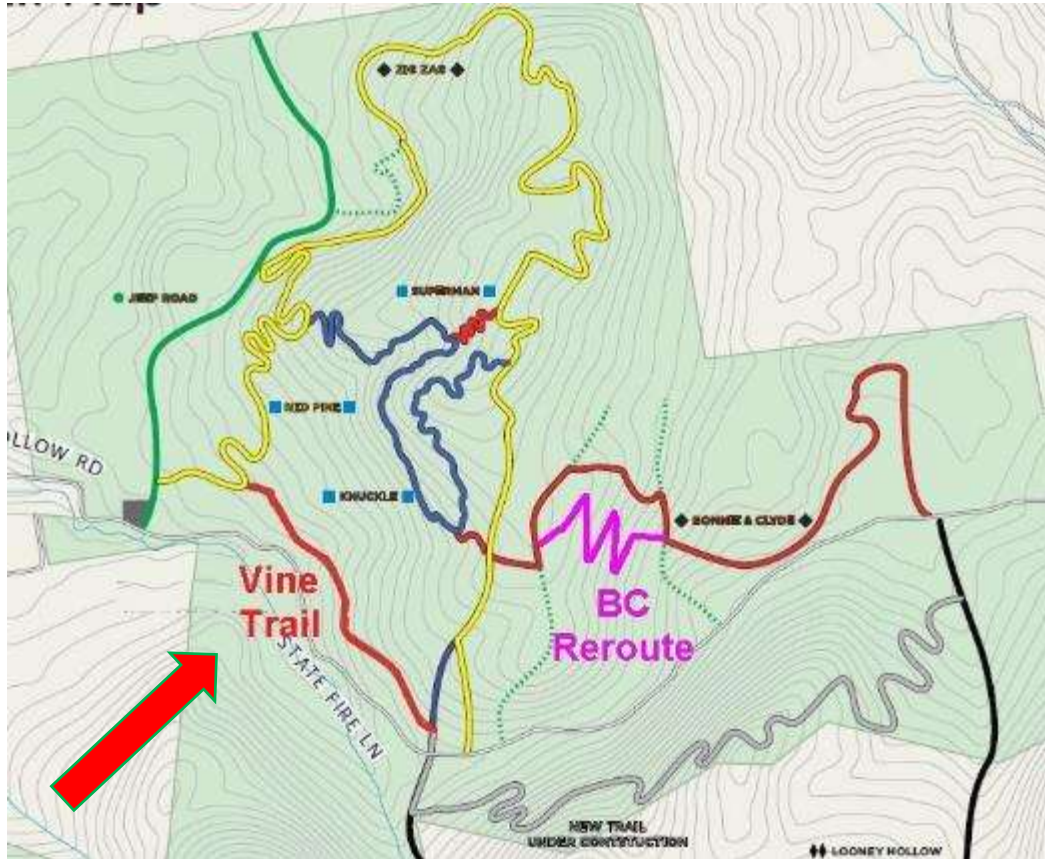
2016 Events

- RPI Civil Engineering Volunteer Group
 - Built Log Bridge and Rock Armoring on the Vine Trail
 - 34 Volunteers (28 Students, 6 SMBA Members)
- Earth Day Event
 - Spring Clean Up, Vine Trail Construction
 - 21 Volunteers (12 SMBA Members, 9 Wives & Kids)
- AEPi Fraternity Volunteer Group
 - Bonnie & Clyde Re-route construction
 - 24 Volunteers (19 Students, 5 SMBA Members)



2016 Year End Meeting

Pittstown State Forest



Accomplishments

- Completed construction of the “Vine” Trail
- Started construction of Bonnie & Clyde re-route
- Spring & Fall Clean Up

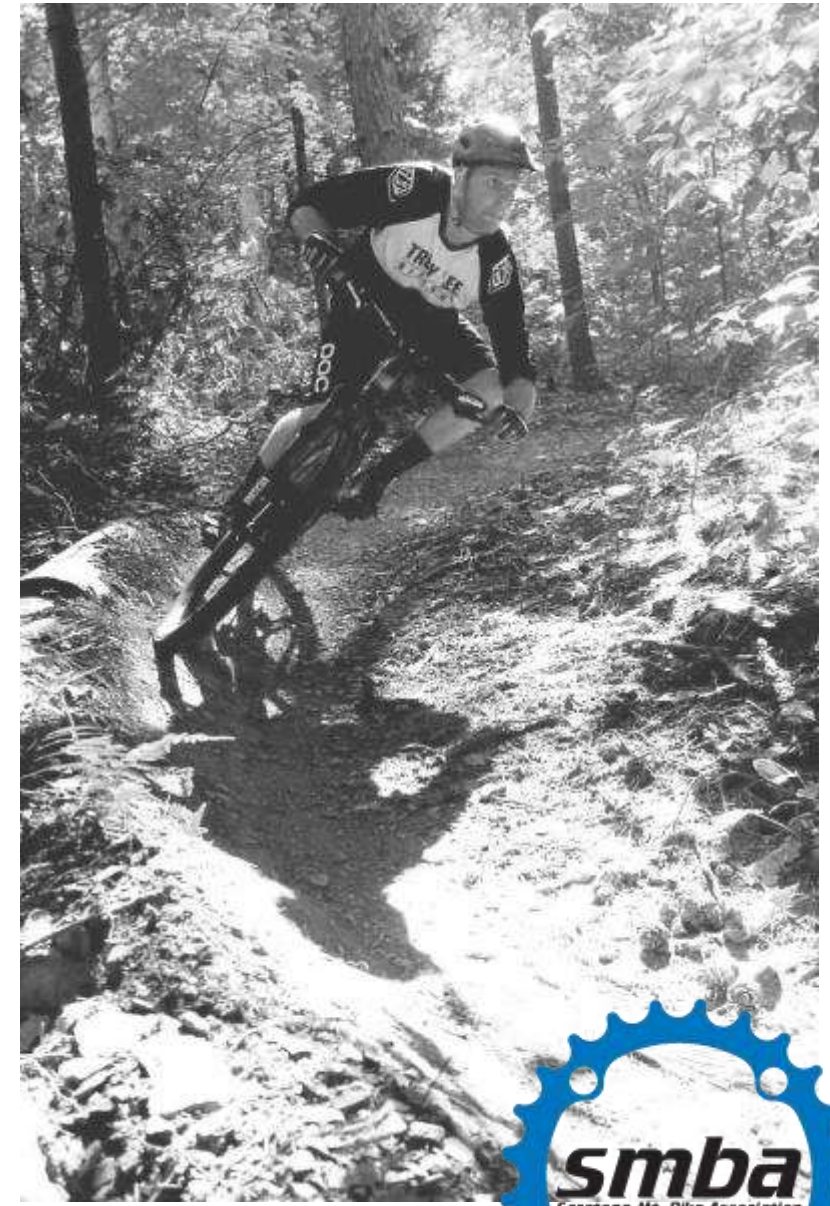
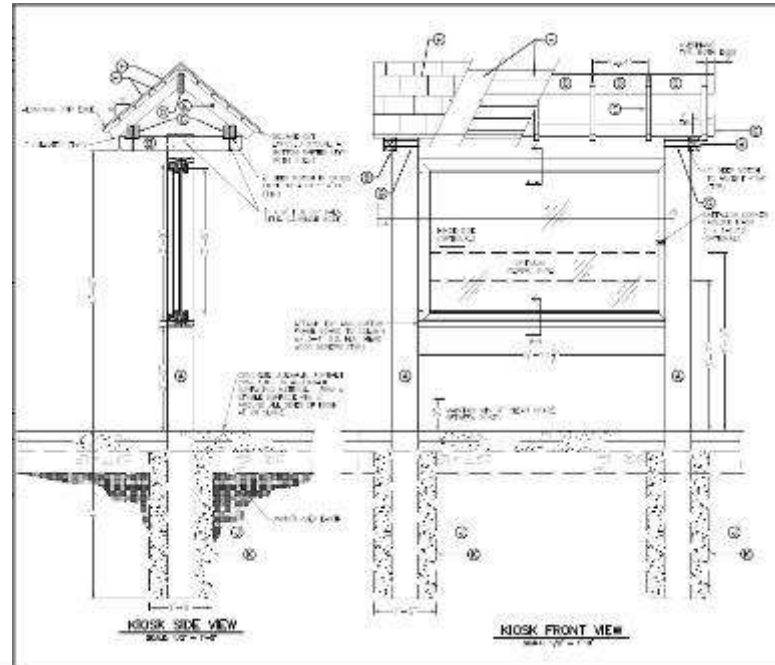
408 Total Volunteer Hours in PSF for 2016!



Pittstown State Forest

Short Term Plans / Goals

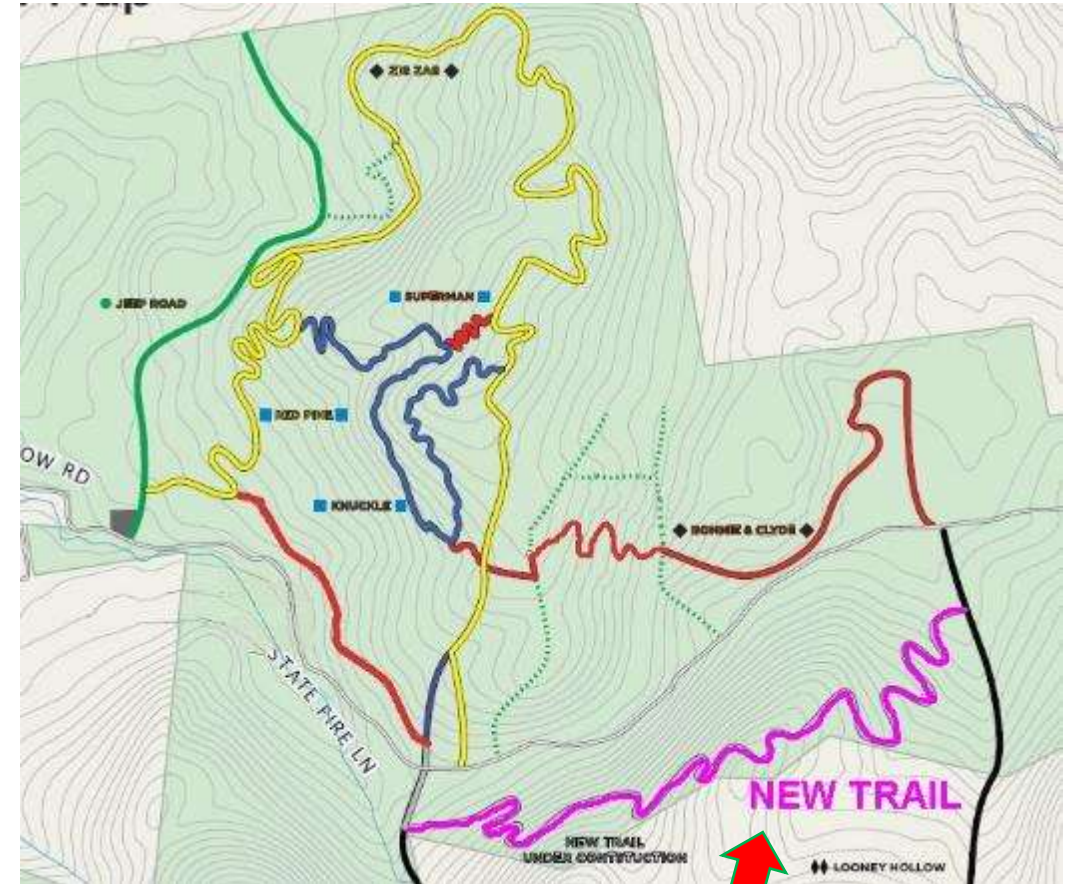
- Finish Bonnie & Clyde Re-route
- Complete small re-routes on BC & ZZ
- Berm Maintenance
- Trail Signage
- Kiosk



Pittstown State Forest

Long Term Plans / Goals

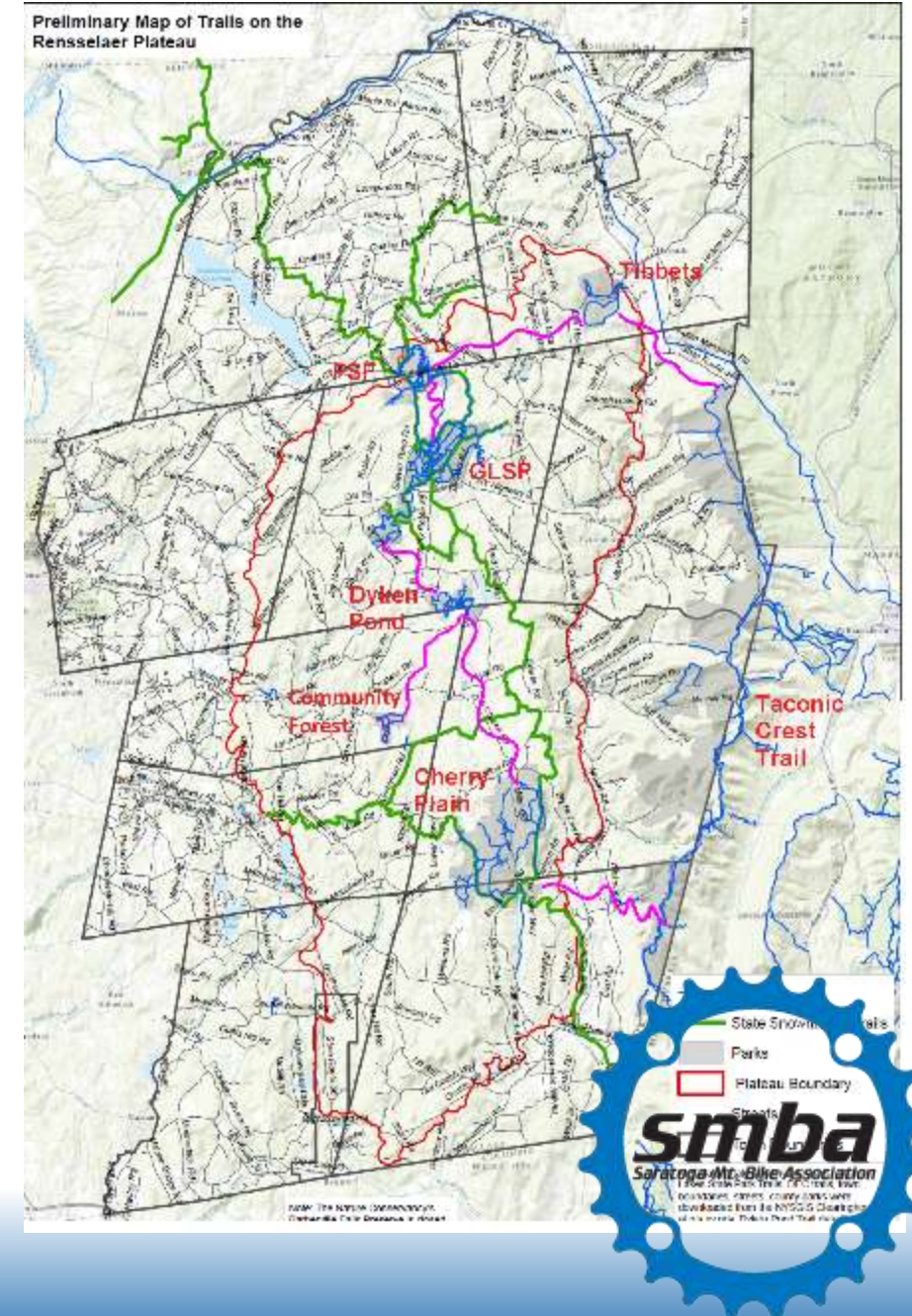
- Complete new trail on South Side of Fire Lane
 - 2.75 Miles, 500' Elevation
 - Must wait until timber sale is complete
- Connector trail between PSF & GLSP
 - 4+ Miles, 500+ Elevation
 - Requires easement on private property
- Rensselaer Plateau Alliance Trail Visions Plan



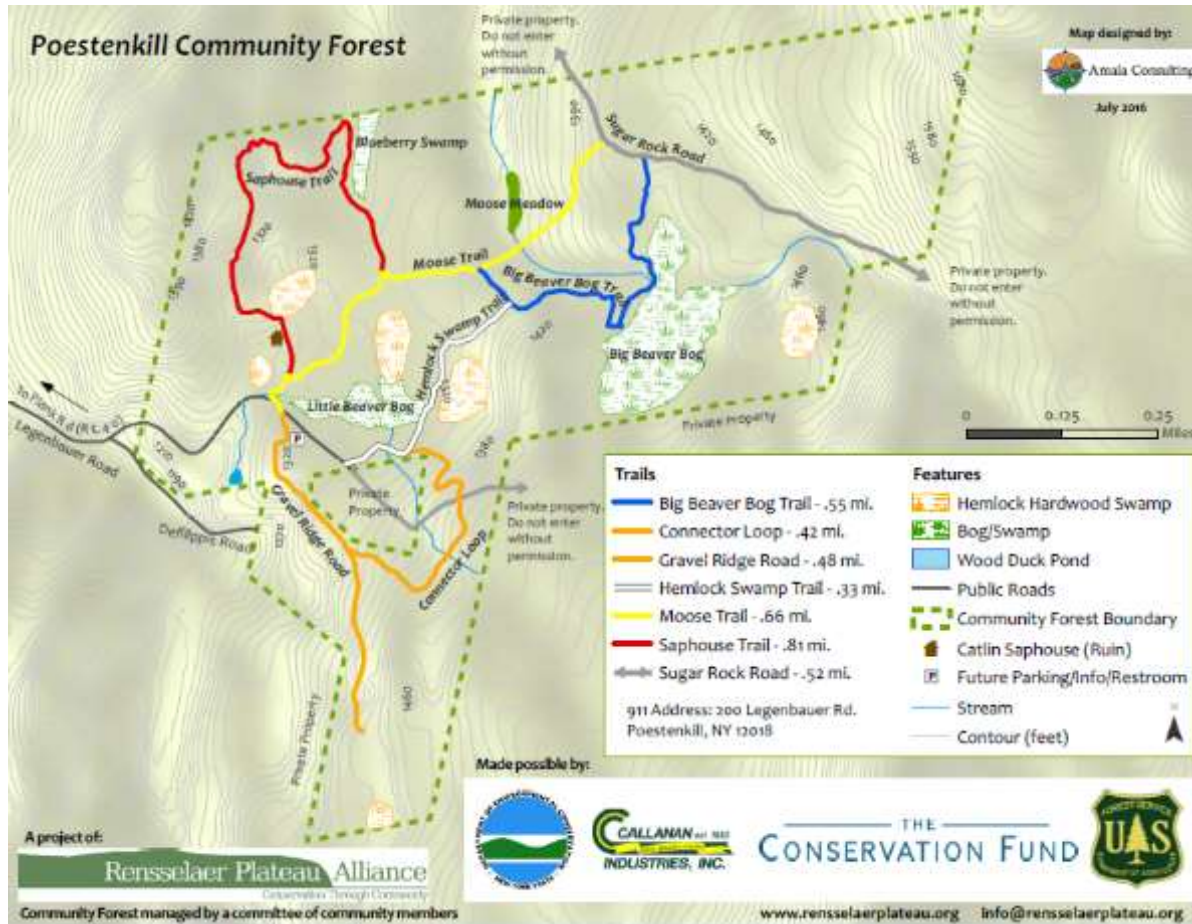
Rensselaer Plateau Alliance

RPA Trail Visions Plan

- Create interconnected trail network spanning the Rensselaer Plateau
- Build trails to connect existing public trail networks
- Obtain conservation easements on private properties
- Received Forest Legacy Grant in 2016
 - Will use funds to conserve 12,000+ acres



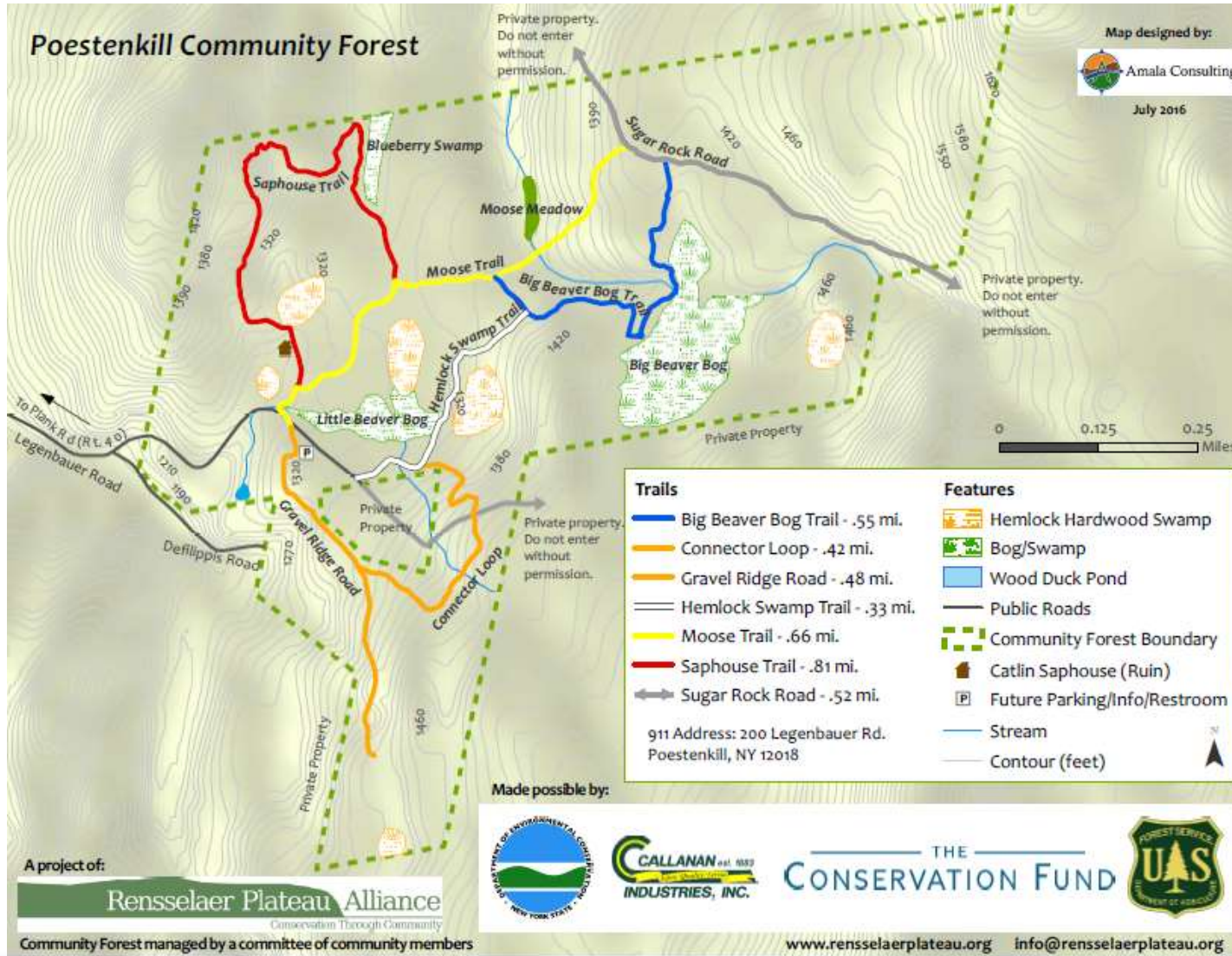
Poestenkill Community Forest



- New map available at RPA website, looks great!
- Hosted a series of skills clinics over the summer
- Parking lot is now open for business
- Game of Logging Level 1 held at the CF, great opportunity for SMBA crews
- Look for an event to be hosted here in the 2017 season!



Poestenkill Community Forest



Daniels Road State Forest

2016 Projects

- SwamPass and other bridge repairs
- Install beaver pipe
- General maintenance, blowdown removal, & leaf clearing

Still waiting...

- Parking lot access & kiosk
- Skidmore easement

2017

- Trail work and improvements
- Continue to push for lot access and new trail
- UMP for Daniels Road- 2017?



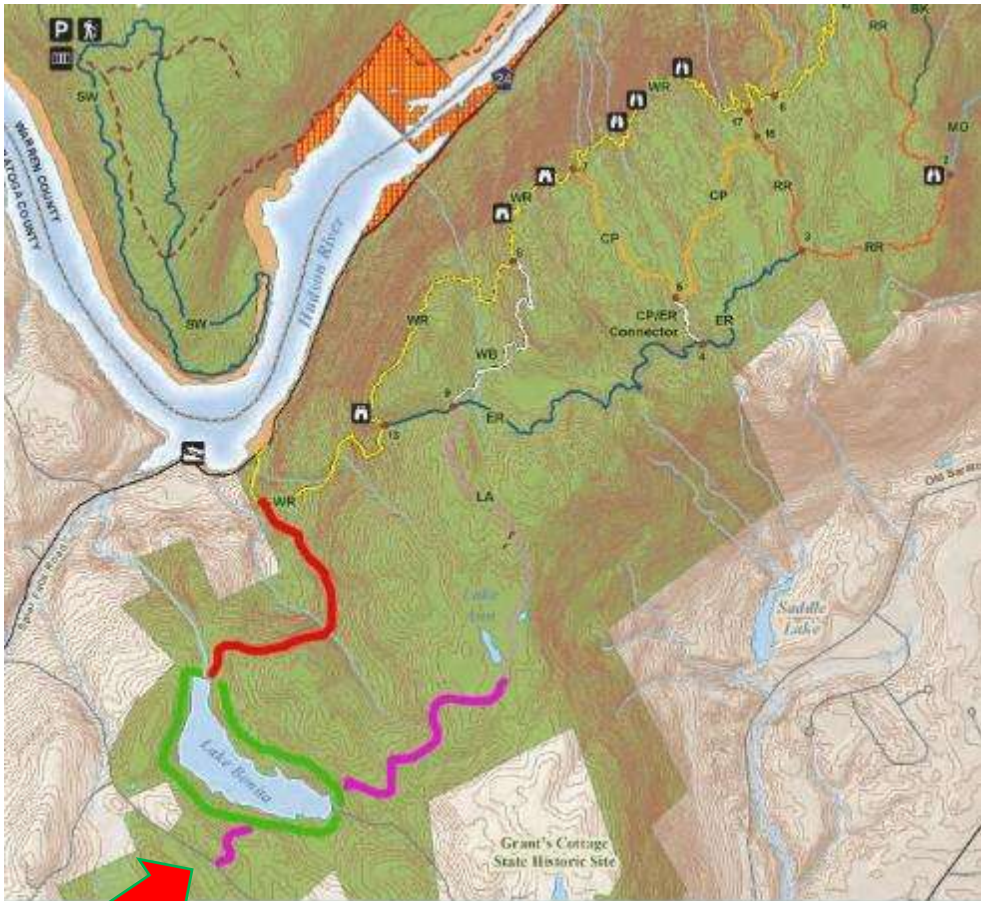
Daniels Road and points north

In the meantime... Trail building at Moreau!

- SMBA worked with NYS Parks to organize two trail build days
- Lake Bonita section of property
- New parking area off Wilton Mtn. Road
- Table at Moreau Nature Fest
- Continue to develop relationship with Park for more work



Moreau Lake – Spier Falls – Lake Bonita



Thacher State Park

Skills area coming along!

- 3 new trails built
- Beginner trails, short loops
- Dirt Jumps!

2017

- Pump track
- Maintain jumps
- Look for new trail opportunities



Thacher State Park



**Photo credit: Jim MacNaughton*



**Photo credit: Jim MacNaughton*

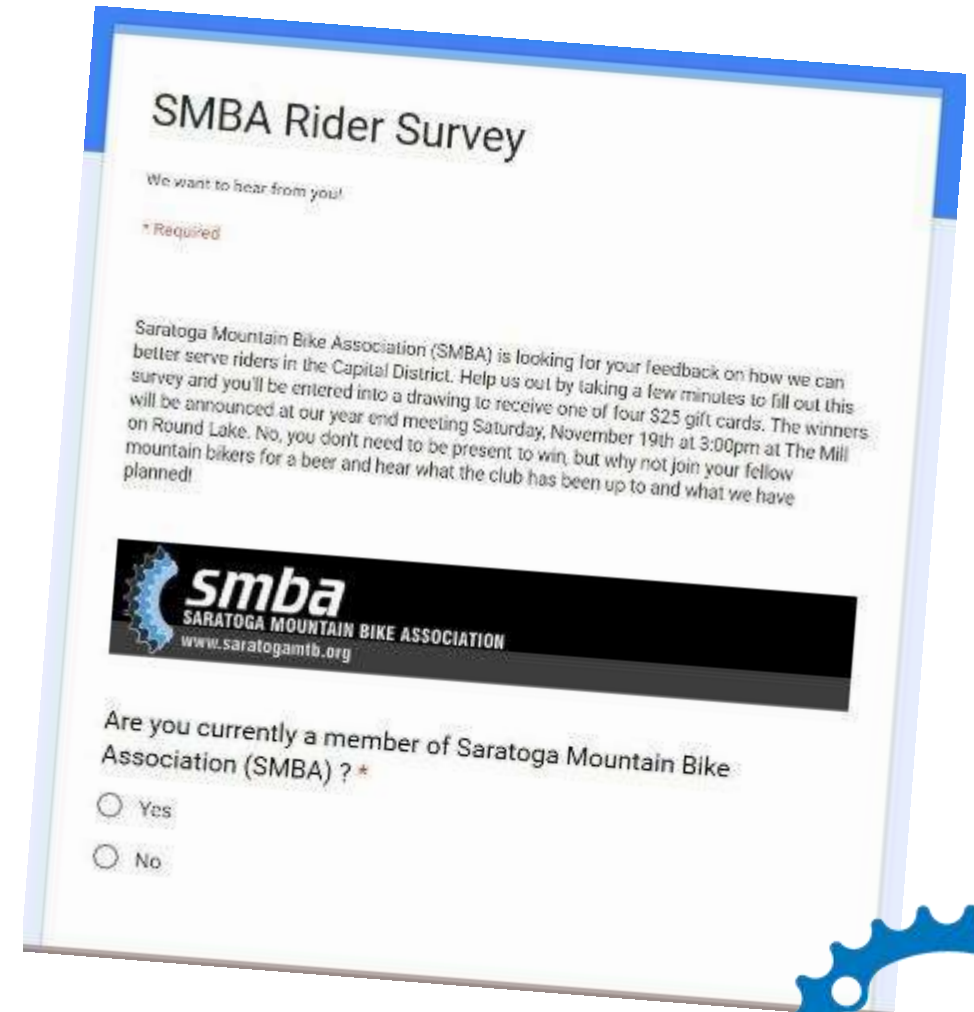


SMBA Rider Survey

Looking for feedback from regional riders to help focus the direction of the club.

150+ responses to date!

Will analyze results over the winter and make decisions based on input

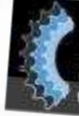


SMBA Rider Survey

We want to hear from you!

* Required

Saratoga Mountain Bike Association (SMBA) is looking for your feedback on how we can better serve riders in the Capital District. Help us out by taking a few minutes to fill out this survey and you'll be entered into a drawing to receive one of four \$25 gift cards. The winners will be announced at our year end meeting Saturday, November 19th at 3:00pm at The Mill on Round Lake. No, you don't need to be present to win, but why not join your fellow mountain bikers for a beer and hear what the club has been up to and what we have planned!

 **smba**
SARATOGA MOUNTAIN BIKE ASSOCIATION
www.saratogamtb.org

Are you currently a member of Saratoga Mountain Bike Association (SMBA) ? *

☐ Yes

☐ No

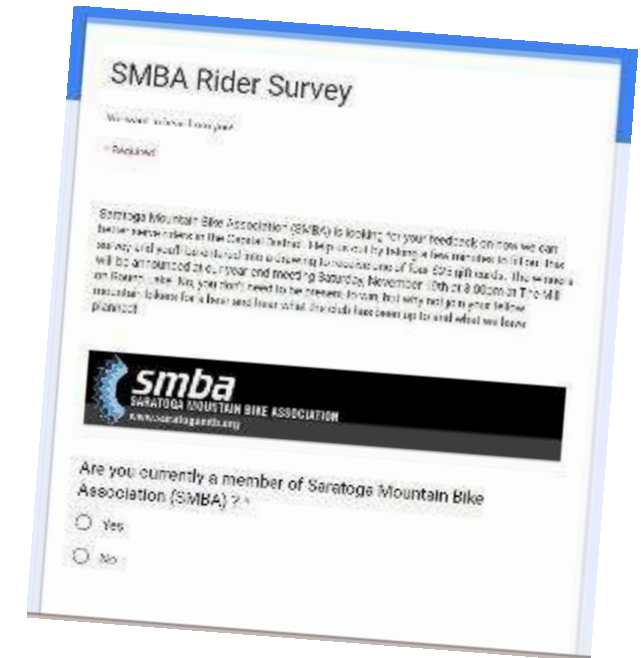


SMBA Rider Survey

Some initial findings:

- Membership:
 - Roughly 60/40 split current non-members / members
 - Half of the current non-members previously WERE members
 - Membership costs are a concern amongst non-members
- Riding Habits:
 - Most respondents are getting out multiple days per week
 - Daniels Road is most popular spot amongst all respondents
- Trail Work
 - Over two-thirds of respondents have not participated in a trail day
 - The two items listed as trail work priorities are basic maintenance and building of new trail
 - Many requests for additional beginner / intermediate trails at existing trail networks
- Club Activities
 - Group rides and club communication are the two areas respondents would like to see improvement
 - Trail building and bike advocacy are the areas respondents thought were presently handled best
 - When asked what the club should focus on in the future, trail building was highest priority.
 - Group rides, bike festivals and continued bike advocacy were also priorities

More to come!



Membership Summary

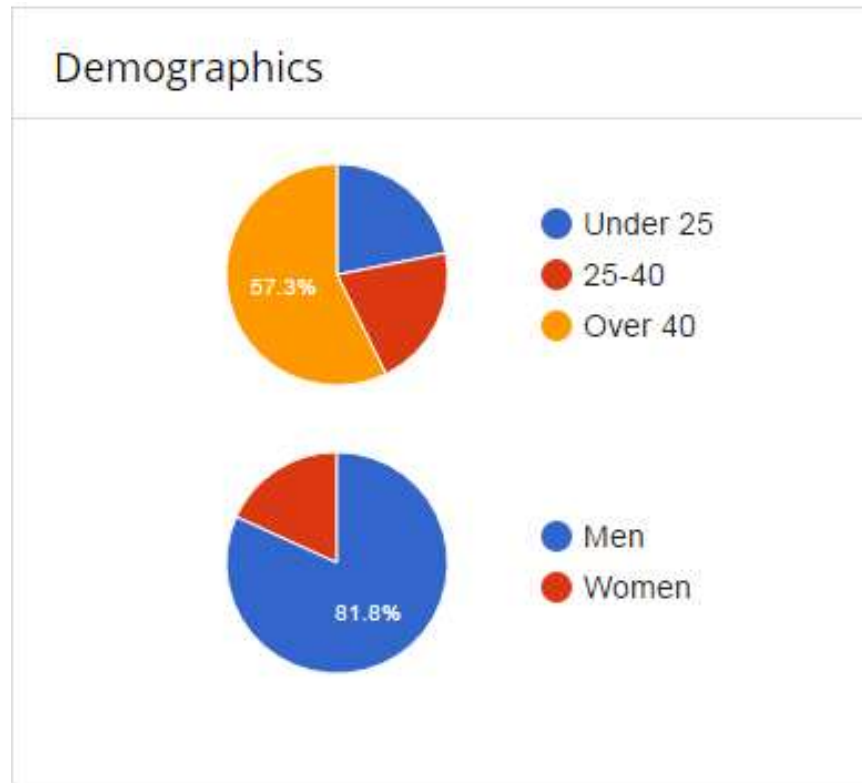


184 From BikeReg.com

- 94 Individual and 90 Family
- New Members: 79 (42 Family & 37 Individual)
- Returning Members: 105 (47 Family & 58 Individual)
- Club Donations: \$135 (down from last year \$265)
- We kept last year's (reduced) fees to \$25/\$30 for individual & \$30/\$35 for family
- Total Amount received through BikeReg: \$3805
- Additional memberships from officers and event sales– about 22
- ***Total Membership for 2016 (to date): 206***



Membership Summary



206 Members in 2016

Past Years Membership:

2015: 198

2014: 195

2013: 455

2012: 456



Looking ahead...

- MUD Event
 - Planning for event in 2017!
- Membership options and alternatives
- Fundraising, raffles, project specific funding
- More advocacy and riding opportunities
 - Palmertown Range
 - Pittstown
 - Thacher Park
 - Daniels Road
 - Rensselaer Co./Poestenkill CF
- Survey results- what can we learn?



And last but not least... Elections & Raffle!

Continuing on:

- President – Chris Morris
- Vice President North – Drew Roginski
- Secretary – Josh Haugh
- Membership Director – Theresa Crombach
- Daniels Road Trail directors - Owen Dougherty and Art Picard
- Pittstown Trail Director – Chris Cavanaugh
- Poestenkill CF Trail Directors - Ian Bonesteel and Jason Anderson
- Member At-Large - Adam Gianni

Open Positions/Nominations:

- Treasurer- Andy Choens
- Vice President South – Ian Bonesteel

**Thanks to Eric Rodriguez & Greg Haworth for their help in 2016*

Looking to get
involved?

We can always use
help organizing work
days, leading trail
crews and more!

